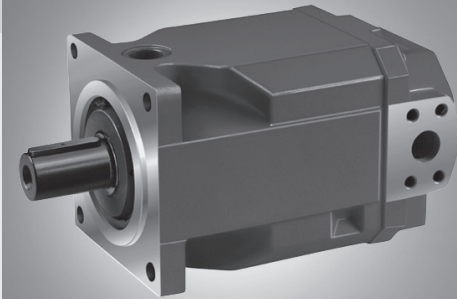


Fixed Displacement Pump A4FO

RE 91 455/04.00
replaces: 01.94

for open circuits

Sizes 16...500
Series 1, Series 3
Nominal pressure up to 400 bar
Peak pressure up to 450 bar



Inhalt

| | |
|--|-------|
| Features | 1 |
| Ordering Code | 2...3 |
| Technical Data | 4...6 |
| Input Power and Flow | 7 |
| Unit Dimensions, Sizes 16, 22, 28 | 8 |
| Unit Dimensions, Size 40 | 9 |
| Unit Dimensions, Size 71 | 10 |
| Unit Dimensions, Size 125 | 11 |
| Unit Dimensions, Size 250 | 12 |
| Unit Dimensions, Size 500 | 13 |
| Unit Dimensions, Through Drives | 14 |
| Permissible Input and Through Drive Rotation Torques | 15 |
| Installation and Commissioning Guidelines | 16 |

Features

| | |
|-------|--|
| 1 | – A4FO axial piston fixed displacement pumps of swashplate design are used for hydraulic drives in open loop circuits. |
| 2...3 | |
| 4...6 | – Flow is proportional to the drive speed and to the displacement. |
| 7 | – Good suction characteristic |
| 8 | – Low noise level |
| 9 | – Long service life |
| 10 | – Pump combinations possible |
| 11 | – Through drive for mounting other pumps |
| 12 | |
| 13 | – Further Informations: Variable Pump A4VSO |
| 14 | |
| 15 | |
| 16 | |

RE 92 050

Ordering Code

| Fluid / Design | 16 | 22 | 28 | 40 | 71 | 125 | 250 | 500 | |
|------------------------|----|----|----|----|----|-----|-----|-----|----|
| Mineral oil, HFD-Fluid | ● | ● | ● | ● | ● | ● | ● | ● | |
| HFA-, HFB-, HFC-Fluid | – | – | – | – | ● | ● | ● | ● | E- |
| High-Speed Design | – | – | – | – | – | – | ● | ● | H- |

Axial piston unit

| | |
|-------------------------|-----|
| Fixed swashplate design | A4F |
|-------------------------|-----|

Operation

| | |
|-----------------------|---|
| Pump in open circuits | 0 |
|-----------------------|---|

Size

| | | | | | | | | |
|---|----|----|----|----|----|-----|-----|-----|
| △ Displacement V_g (cm ³) | 16 | 22 | 28 | 40 | 71 | 125 | 250 | 500 |
|---|----|----|----|----|----|-----|-----|-----|

Series

| | | |
|--|--------------------------|---|
| | sizes 16...40, 125...500 | 3 |
| | size 71 | 1 |

Index

| | | |
|--|----------------|---|
| | sizes 16...40 | 2 |
| | sizes 71...500 | 0 |

Direction of rotation

| | | |
|---------------------|----------------|---|
| viewed on shaft end | clockwise | R |
| | anti-clockwise | L |

Seals

| | | |
|--|----------------|---|
| NBR (nitril-caoutchouc), shaft seal in FKM (fluor-caoutchouc) | sizes 16...40 | N |
| | sizes 71...500 | P |
| FKM (fluor-caoutchouc) | sizes 71...500 | V |

Shaft end

| | 16 | 22 | 28 | 40 | 71 | 125 | 250 | 500 | |
|-----------------------------------|----|----|----|----|----|-----|-----|-----|---|
| splined shaft SAE | ● | ● | ● | – | – | – | – | – | S |
| splined shaft SAE | – | – | – | ● | – | – | – | – | T |
| Splined shaft DIN 5480 | – | – | – | – | ● | ● | ● | ● | Z |
| parallel shaft, with key DIN 6885 | – | – | – | – | ● | ● | ● | ● | P |

Mounting flange

| | 16 | 22 | 28 | 40 | 71 | 125 | 250 | 500 | |
|------------|----|----|----|----|----|-----|-----|-----|---|
| SAE 2-hole | ● | ● | ● | ● | – | – | – | – | C |
| ISO 4-hole | – | – | – | – | ● | ● | ● | – | B |
| ISO 8-hole | – | – | – | – | – | – | – | ● | H |

Service line connections

| | sizes 16...40 | sizes 71...500 | |
|--|---------------|----------------|----|
| Pressure and suction port SAE at side (opposite side) (metric fixing screws) | ● | – | 12 |
| Pressure and suction port SAE at side, rotated by 90° (metric fixing screws) | – | ● | 25 |
| 2nd pressure port B ₁ opposite B - when delivered plugged with a flange | – | ● | |

● = available

○ = in preparation

– = not available

Ordering Code

| | | | | | | | | | | |
|-----|---|---|--|--|---|--|--|--|--|--|
| A4F | O | / | | | - | | | | | |
|-----|---|---|--|--|---|--|--|--|--|--|

Fluid

Axial piston unit

Operation

Size

Series

Index

Direction of rotation

Seals

Shaft end

Mounting flange

Service line connections

Through Drive

16 22 28 40 71 125 250 500

| flange | hub | for mounting | 16 | 22 | 28 | 40 | 71 | 125 | 250 | 500 | |
|---|----------------|--------------------------|----|----|----|----|----|-----|-----|-----|-----|
| – | – | | ● | ● | ● | – | ● | ● | ● | ● | N00 |
| SAE A, 2-hole | SAE A | G2, A10VSO 10 | ● | ● | ● | ● | – | – | – | – | K01 |
| SAE B, 2-hole | SAE B | A4FO 16...28 | – | ● | ● | – | – | – | – | – | K02 |
| ISO 80, 2-hole | SAE A-B | A10VSO 18 | – | – | – | – | ○ | ● | ● | ○ | KB2 |
| ISO 100, 2-hole | SAE B | A10VSO 28 | – | – | – | – | ○ | ○ | ○ | ○ | KB3 |
| ISO 100, 2-hole | SAE B-B | A10VSO 45 | – | – | – | – | ○ | ○ | ○ | ○ | KB4 |
| ISO 125, 2-hole | SAE C | A10VSO 71 | – | – | – | – | ○ | ○ | ○ | ○ | KB5 |
| ISO 125, 2-hole | SAE C-C | A10VSO 100 | – | – | – | – | – | ○ | ○ | ○ | KB6 |
| ISO 180, 4-hole | SAE D | A10VSO 140 | – | – | – | – | – | – | ○ | ○ | KB7 |
| ISO 125, 4-hole | N32 (DIN 5480) | A4VS 40 | – | – | – | – | ○ | ○ | ● | ○ | K31 |
| ISO 140, 4-hole | N40 (DIN 5480) | A4FO 71 / A4VS 71 | – | – | – | – | ● | ● | ● | ○ | K33 |
| ISO 160, 4-hole | N50 (DIN 5480) | A4FO 125 / A4VS 125, 180 | – | – | – | – | – | ● | ● | ○ | K34 |
| ISO 224, 4-hole | N60 (DIN 5480) | A4FO 250 / A4VS 250 | – | – | – | – | – | – | ● | ○ | K35 |
| ISO 315, 8-hole | N80 (DIN 5480) | A4FO 500 / A4VS 500 | – | – | – | – | – | – | – | ○ | K43 |
| with through drive shaft, without hub, without adapter flange, with cover plate | | | – | – | – | – | ○ | ● | ● | ○ | K99 |

Technical Data

Fluid

To review the application of A4FO pumps with the selected hydraulic fluid, detailed fluid compatibility and application data can be found in data sheets RE 90220 (mineral oil), RE 90221 (environmentally acceptable hydraulic fluids) and RE 90223 (fire resistant fluids, HF).

When using HF- or environmentally acceptable hydraulic fluids possible limitations for the technical data have to be taken into consideration. If necessary please consult our technical department (please indicate type of the hydraulic fluid used for your application on the order sheet).

Sizes 16...40 of fixed pump A4FO are not suitable for operation with HFA, HFB or HFC-fluids.

Operating viscosity range

In order to obtain optimum efficiency and service life, we recommend that the operating viscosity (at operating temperature) be selected from within the range:

$$v_{opt} = \text{operating viscosity } 16...36 \text{ mm}^2/\text{s}$$

referred to the tank temperature (open circuit).

Viscosity limits

The limiting values for viscosity are as follows:

Sizes 16...40

$v_{min} = 5 \text{ mm}^2/\text{s}$,
short term at a max. permissible temperature of $t_{max} = 115^\circ\text{C}$

$v_{max} = 1600$, short term on cold start ($t_{min} = -40^\circ\text{C}$)

Sizes 71...500

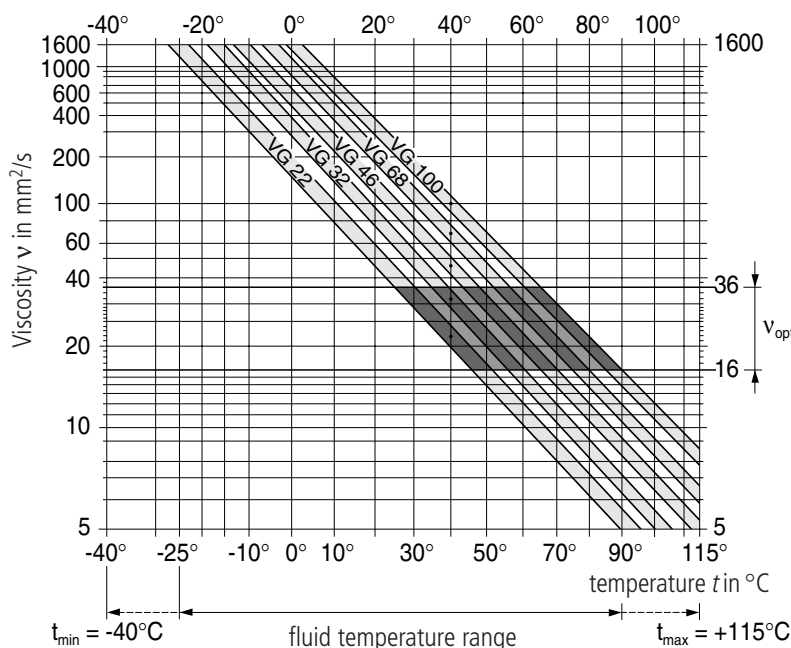
$v_{min} = 10 \text{ mm}^2/\text{s}$,
short term at a max. permissible leakage oil temp. of $t_{max} = 90^\circ\text{C}$

$v_{max} = 1000 \text{ mm}^2/\text{s}$, short term on cold start ($t_{min} = -25^\circ\text{C}$)

Please note that the max. fluid temperature is also not exceeded in certain areas (for instance bearing area).

At temperatures of -25°C up to -40°C special measures may be required for certain installation positions. Please contact us.

Selection diagram



Notes on the selection of the hydraulic fluid

In order to select the correct fluid, it is necessary to know the operating temperature in the tank (open circuit) in relation to the ambient temperature.

The hydraulic fluid should be selected so that within the operating temperature range, the operating viscosity lies within the optimum range (v_{opt}) (see shaded section of the selection diagram). We recommend that the highest possible viscosity range should be chosen in each case.

Example: At an ambient temperature of $X^\circ\text{C}$ the operating temperature is 60°C . Within the operating viscosity range (v_{opt} ; shaded area), this corresponds to viscosity ranges VG 46 or VG 68. VG 68 should be selected.

Important: The leakage oil (case drain oil) temperature is influenced by pressure and pump speed and is always higher than the tank temperature. However, at no point in the circuit may the temperature exceed 115°C for sizes 16...40 or 90°C for sizes 71...500.

If it is not possible to comply with the above conditions because of extreme operating parameters or high ambient temperatures please consult us.

Filtration

The finer the filtration the better the achieved cleanliness level of the pressure fluid and the longer the life of the axial piston unit.

To ensure the functioning of the axial piston unit a minimum cleanliness level of

9 to NAS 1638

18/15 to ISO/DIS 4406 is necessary.

At very high temperatures of the hydraulic fluid (90°C to max. 115°C , not permissible for sizes 71...500) at least cleanliness level

8 to NAS 1638

17/14 to ISO/DIS 4406 is necessary.

If above mentioned grades cannot be maintained please consult us.

Technical Data

valid for operation with mineral oils

Sizes 16...40

Working pressure range inlet

Absolut pressure at port S (suction port)

$p_{abs. min}$ _____ 0,8 bar

$p_{abs. max}$ _____ 2 bar

Working pressure range outlet

Maximum pressure at port A or B (pressure data to DIN 24312)

Nominal pressure p_N _____ 400 bar

Peak pressure p_{max} _____ 450 bar

Note:

When mounting further pumps at the through drive of the A4FO the max. input torque of the drive shaft has not to be exceeded (as to page 15). This may necessitate a limitation of the max. admissible pressure values.

Direction of flow

clockwise operation anti-clockwise operation

Sizes 16...40

S to B

S to A

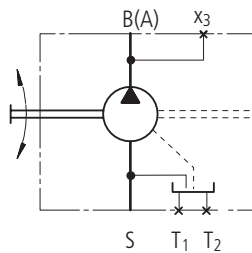
Symbol

A, B service line port

S suction port

T_1, T_2 drain port
(plugged)

x_3 gauge port



Case drain pressure

Perm. case drain pressure (housing pressure)

p_L _____ 2 bar abs.

The leakage oil chamber is connected to the suction chamber. A case drain line is therefore not necessary.

Sizes 71...500

Working pressure range inlet

Absolut pressure at port S (suction port)

$p_{abs. min}$ _____ 0,8 bar

$p_{abs. max}$ _____ 30 bar

Working pressure range outlet

Maximum pressure at port A or B (pressure data to DIN 24312)

Nominal pressure p_N _____ 350 bar

Peak pressure p_{max} _____ 400 bar

Flushing of the bearings (Sizes 125...500)

For informations about operating conditions, flushing quantities and notes on bearing flushing see data sheet RE 92 050 (A4VSO).

Direction of flow

clockwise operation anti-clockwise operation

Sizes 71...500

S to B

S to B

Symbol

B, B₁ service line port

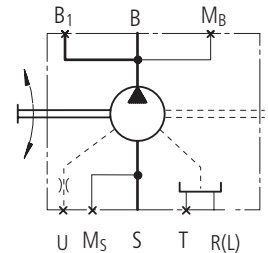
S suction port

T, R(L) drain port
(1 port plugged)

M_B gauge port working pressure

M_S gauge port suction pressure

U flushing port (sizes 125...500)



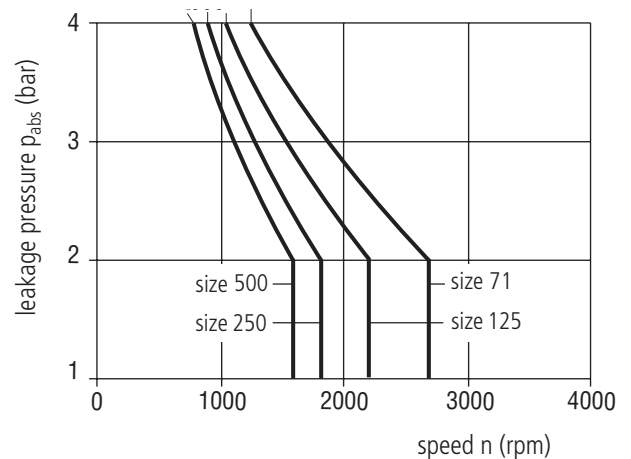
Leakage pressure

The max. permissible leakage pressure (housing pressure) is dependent on speed (see diagram). The pressure in the housing must be equal to or greater than the external pressure on the shaft sealing ring.

Max. leakage pressure (housing pressure)

p_L _____ 4 bar abs.

A case drain line to the tank is necessary.



Technical Data

Table of values (theoretical values, without considering η_{mh} and η_v ; values rounded)

| Size | | | 16 | 22 | 28 | 40 | 71 | 125 | 250/H* | 500/H* |
|--|------------------|------------------|--------|--------|--------|--------|-------------------|-------------------|-----------------------|-----------------------|
| Displacement | V_g | cm ³ | 16 | 22 | 28 | 40 | 71 | 125 | 250 | 500 |
| Max. speed ¹⁾ | n_{max} | rpm | 4000 | 3600 | 3000 | 2750 | 2200 | 1800 | 1500/1900 | 1320/1500 |
| Max. permissible speed (speed limit) with increased inlet pressure | $n_{max\ perm.}$ | rpm | 4800 | 4500 | 3750 | 3400 | 2700 | 2200 | 1800/2100 | 1600/1800 |
| Output flow at n_{max} ²⁾ | $q_{V\ max}$ | L/min | 62 | 77 | 81 | 107 | 152 | 218 | 364/461 | 640/728 |
| Power at $q_{V\ max}$; $\Delta p = 400$ bar | P_{max} | kW | 43 | 53 | 56 | 73 | 91 ³⁾ | 131 ³⁾ | 219/277 ³⁾ | 385/437 ³⁾ |
| Max. torque at $\Delta p = 400$ bar | T_{max} | Nm | 102 | 140 | 178 | 254 | 395 ³⁾ | 696 ³⁾ | 1391 ³⁾ | 2783 ³⁾ |
| Case volume | | L | 0,3 | 0,3 | 0,3 | 0,4 | 2,0 | 3,0 | 7,0 | 11,0 |
| Moment of inertia, about drive axis | J | kgm ² | 0,0017 | 0,0017 | 0,0017 | 0,0030 | 0,0121 | 0,0300 | 0,0959 | 0,3325 |
| Weight (approx.) | m | kg | 13,5 | 13,5 | 13,5 | 16,5 | 34 | 61 | 120 | 220 |

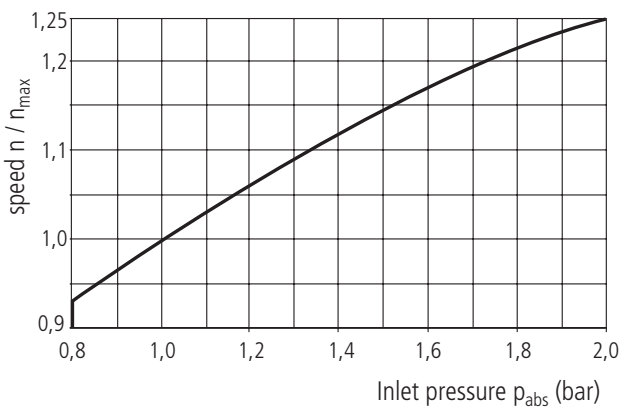
¹⁾ The values shown are valid for an absolute pressure (p_{abs}) of 1 bar at the suction inlet S and when operated on mineral oil.

²⁾ 3 % volumetric loss included

³⁾ $\Delta p = 350$ bar H*: High-speed-design

Maximum permissible speed (speed limit)

Maximum permissible speed with increased inlet pressure p_{abs} at suction port S (note: max. perm. speed $n_{max\ perm}$ (speed limit))



Calculation of size

Flow $q_v = \frac{V_g \cdot n \cdot \eta_v}{1000}$ in L/min

Torque $T = \frac{1,59 \cdot V_g \cdot \Delta p}{100 \cdot \eta_{mh}} = \frac{V_g \cdot \Delta p}{20 \cdot \pi \cdot \eta_{mh}}$ in Nm

Power $P = \frac{T \cdot n}{9549} = \frac{2 \pi \cdot T \cdot n}{60\,000} = \frac{q_v \cdot \Delta p}{600 \cdot \eta_t}$ in kW

V_g = displacement per revolution in cm³

Δp = differential pressure in bar

n = speed in rpm

η_v = volumetric efficiency

η_{mh} = mechanical-hydraulic efficiency

η_t = overall efficiency

Input drive

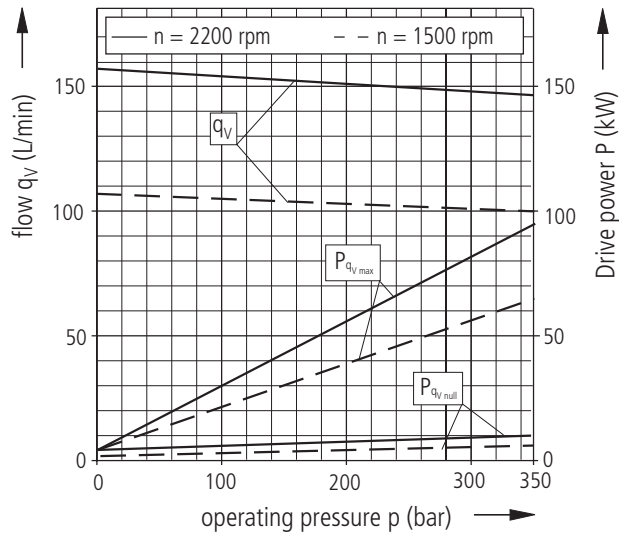
Permissible axial and radial force on drive shaft

| Size | | | 16 | 22 | 28 | 40 | | |
|---|---|--------------|---------------|------|------|------|------|------|
| Distance of F_q (from shaft collar) | | a | mm | 17,5 | 17,5 | 17,5 | 17,5 | |
| | | b | mm | 30 | 30 | 30 | 30 | |
| | | c | mm | 42,5 | 42,5 | 42,5 | 42,5 | |
| max. permissible radial force at distance | a | $F_{q\ max}$ | N | 2800 | 2500 | 2050 | 3600 | |
| | b | $F_{q\ max}$ | N | 1600 | 1400 | 1150 | 2891 | |
| | c | $F_{q\ max}$ | N | 1150 | 1000 | 830 | 2416 | |
| max. permissible axial force | | - | $F_{ax\ max}$ | N | 1557 | 1557 | 1557 | 2120 |
| | | + | $F_{ax\ max}$ | N | 417 | 417 | 417 | 880 |

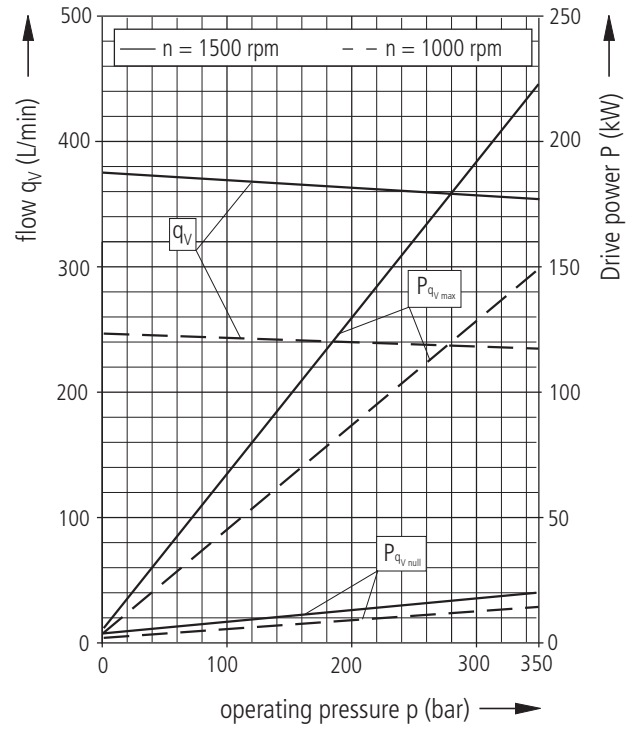
| Size | | | 71 | 125 | 250 | 500 | | |
|---|--|-------------------|---------------|------|------|------|------|------|
| Max. axial force at housing pressure p_{max} 1 bar abs. | | $\pm F_{ax\ max}$ | N | 1400 | 1900 | 3000 | 4000 | |
| Max. axial force at housing pressure p_{max} 4 bar abs. | | + | $F_{ax\ max}$ | N | 810 | 1050 | 1850 | 2500 |
| | | - | $F_{ax\ max}$ | N | 1990 | 2750 | 4150 | 5500 |
| Max. shearing force | | $F_{q\ max}$ | N | 1700 | 2500 | 4000 | 5000 | |

Input Power and Flow

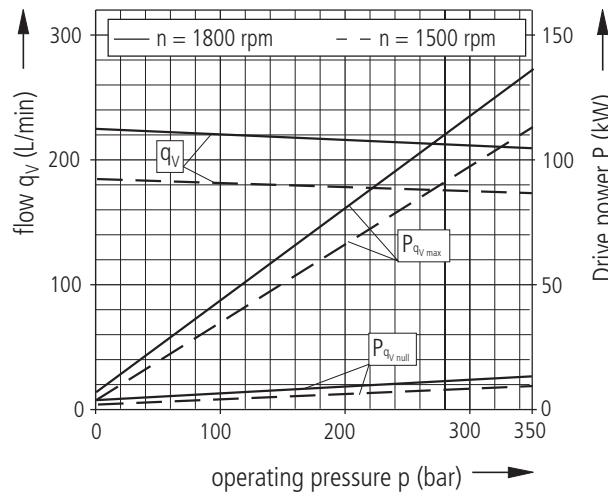
Size 71



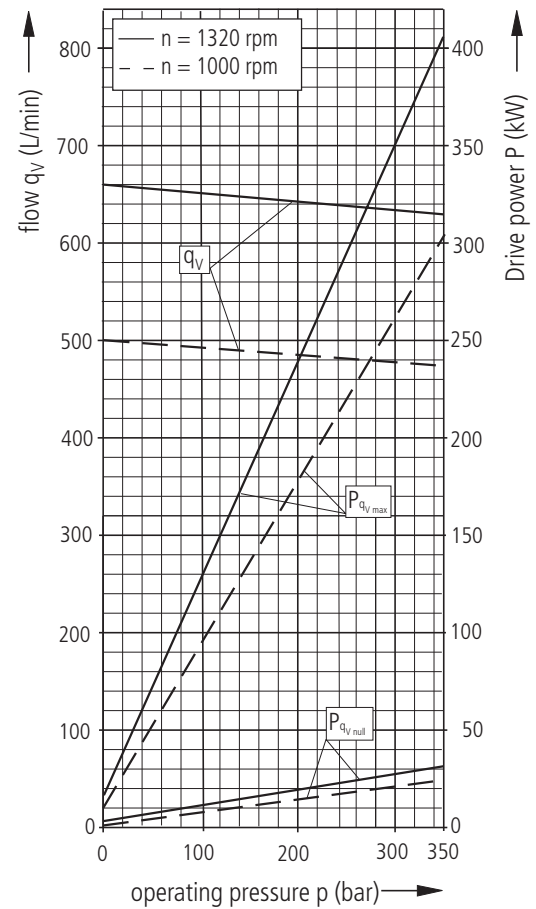
Size 250



Size 125



Size 500



Total efficiency:
$$\eta_t = \frac{q_v \cdot p}{P_{q_v, \max} \cdot 600}$$

Volumetric efficiency:
$$\eta_v = \frac{q_v}{q_{v, \text{theor}}}$$

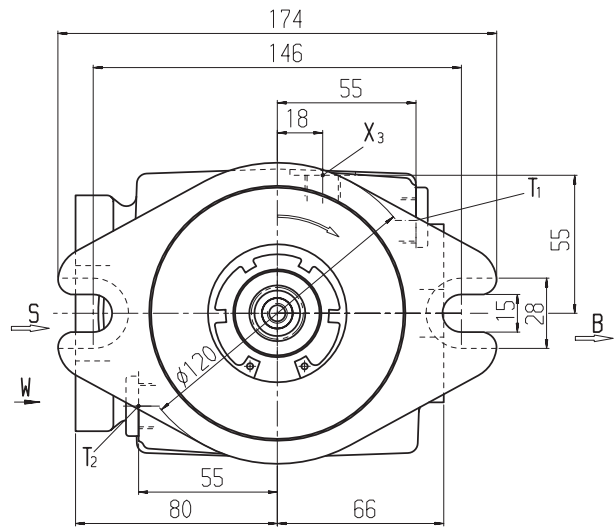
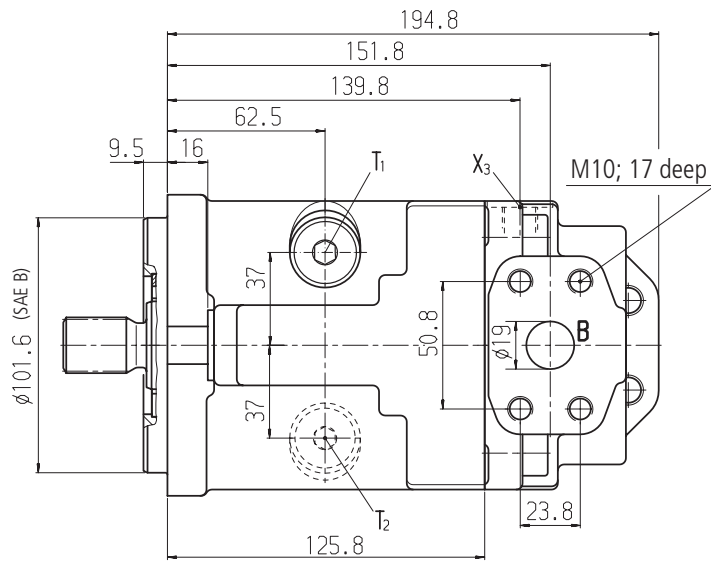
(Fluid: hydraulic oil ISO VG 46 DIN 51519, $t = 50^\circ\text{C}$)

Unit Dimensions, Sizes 16, 22, 28

Prior to finalising your design, please obtain a certified drawing.

Clockwise operation

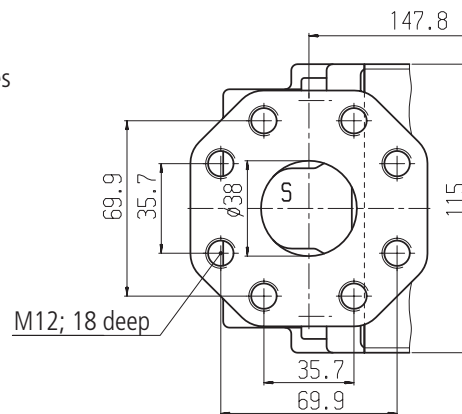
(port plate is rotated via 180° for anti-clockwise operation)



Connections

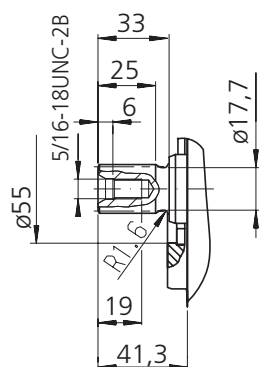
| | | |
|---------------------------------|------------------------------|---|
| B (A) | Service line ports | SAE 3/4" 420 bar (6000 psi) high pressure series |
| S | Suction port | SAE 1 1/2" 35 bar (500 psi) standard series |
| T ₁ , T ₂ | Case drain port, oil filling | M18x1,5; 12 deep |
| x ₃ | Gauge port | M14x1,5; 12 deep |

View W



Shaft ends

S
Splined shaft SAE 7/8" (SAE B),
pressure angle 30°,
13 teeth, 16/32 Pitch,
flat root, side fit,
tolerance class 5
ANSI B92.1a-1976

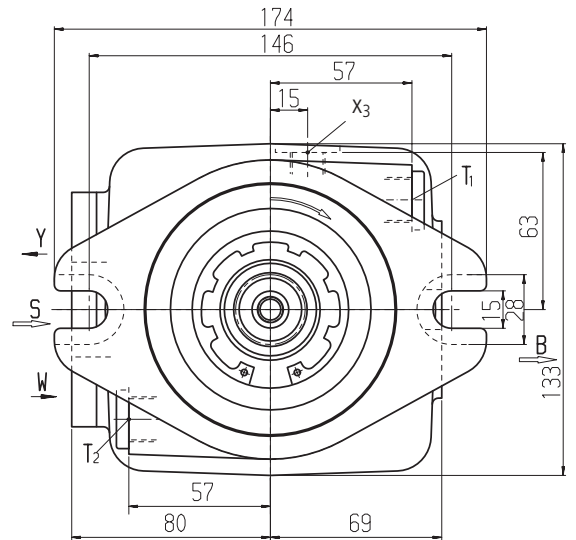
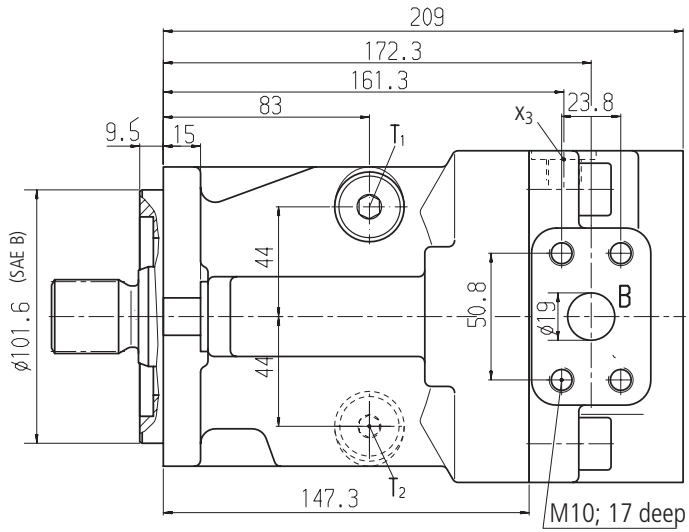


Unit Dimensions, Size 40

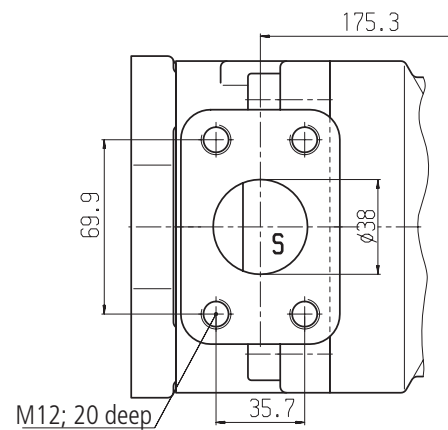
Prior to finalising your design, please obtain a certified drawing.

Clockwise operation

(port plate is rotated via 180° for anti-clockwise operation)



View W



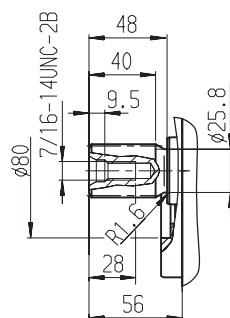
Connections

| | | |
|---------------------------------|------------------------------|---|
| B (A) | Service line ports | SAE 3/4" 420 bar (6000 psi) high pressure series |
| S | Suction port | SAE 1 1/2" 35 bar (500 psi) standard series |
| T ₁ , T ₂ | Case drain port, oil filling | M18x1,5; 12 deep |
| x ₃ | Gauge port | M14x1,5; 12 deep |

Shaft ends

T

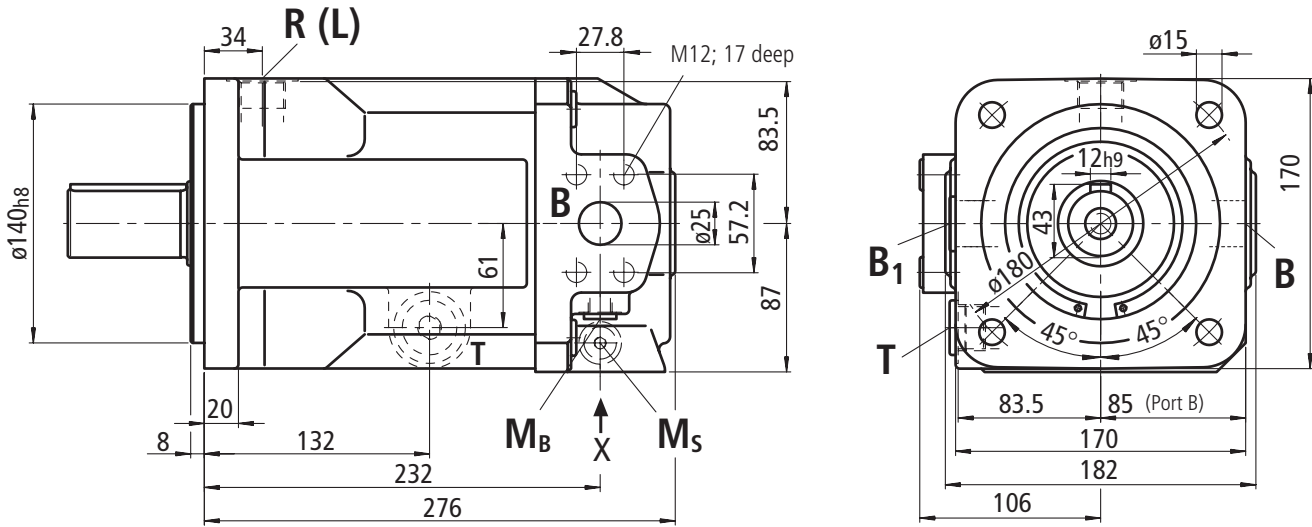
Splined shaft SAE 1 1/4" (SAE C)
pressure angle 30°,
14 teeth, 12/24 Pitch
flat root side fit,
tolerance class 5
ANSI B92.1a-1976



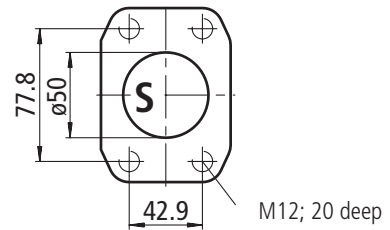
Unit Dimensions, Size 71

Prior to finalising your design, please obtain a certified drawing.

Clockwise and anti-clockwise operation



View X

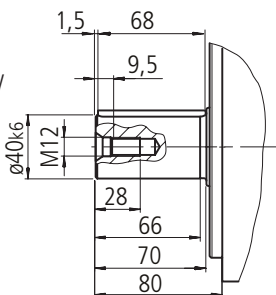


Connections

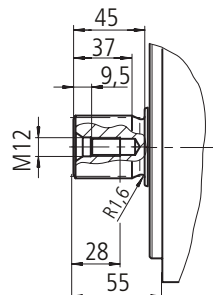
| | | |
|----------------|--|-------------------------------|
| B | Service line port | SAE 1" (high pressure series) |
| B ₁ | 2nd service line port (plugged with a flange) | SAE 1" (high pressure series) |
| S | Suction port | SAE 2" (standard series) |
| R (L) | Case drain port, oil filling | M27x2 |
| T | Oil drain (plugged) | M27x2 |
| M _B | Gauge port operating pressure (plugged) | M14x1,5 |
| M _S | Gauge port suction pressure (plugged) | M14x1,5 |

Shaft ends

P
Parallel shaft with key
AS 12x8x68
DIN 6885



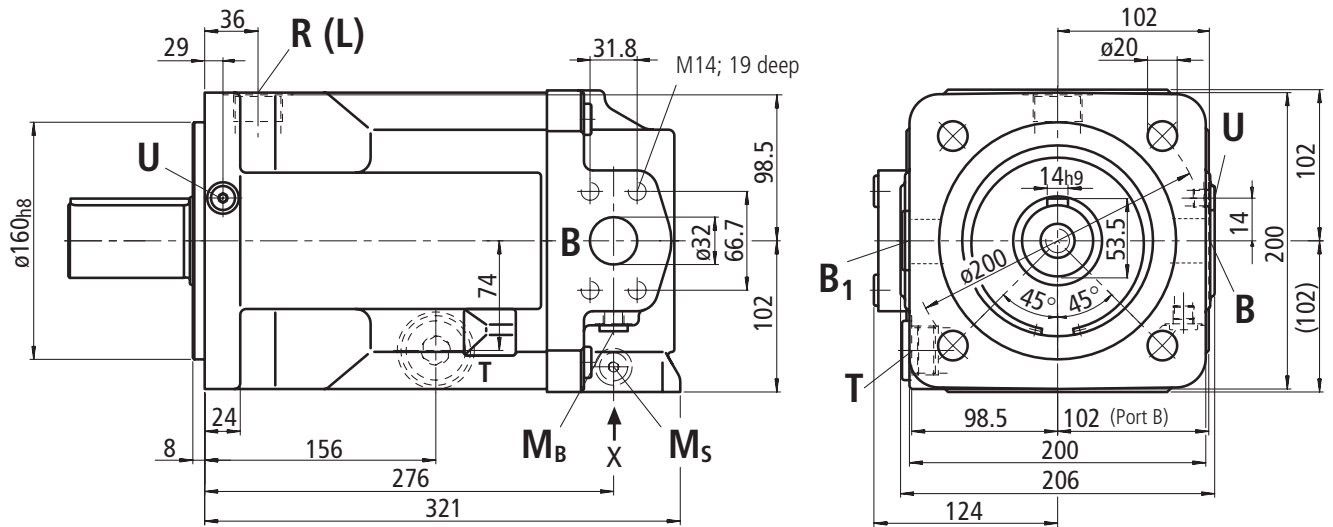
Z
Splined shaft
W40x2x30x18x9g
DIN 5480



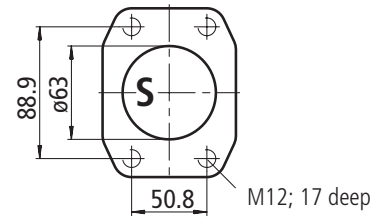
Unit Dimensions, Size 125

Prior to finalising your design, please obtain a certified drawing.

Clockwise and anti-clockwise operation



View X

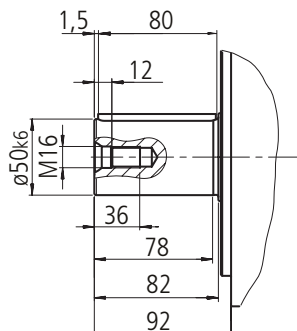


Connections

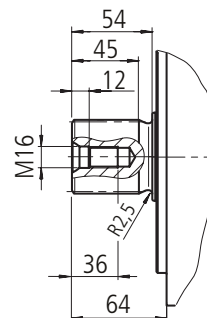
| | | |
|----------------|---|-----------------------------------|
| B | Service line port | SAE 1 1/4" (high pressure series) |
| B ₁ | 2nd service line port (plugged with a flange) | SAE 1 1/4" (high pressure series) |
| S | Suction port | SAE 2 1/2" (standard series) |
| R (L) | Case drain port, oil filling | M33x2 |
| T | Oil drain (plugged) | M33x2 |
| M _B | Gauge port operating pressure (plugged) | M14x1,5 |
| M _S | Gauge port suction pressure (plugged) | M14x1,5 |
| U | Flushing port (bearing flushing) (plugged) | M14x1,5 |

Shaft ends

P
Parallel shaft with key
14x9x80
DIN 6885



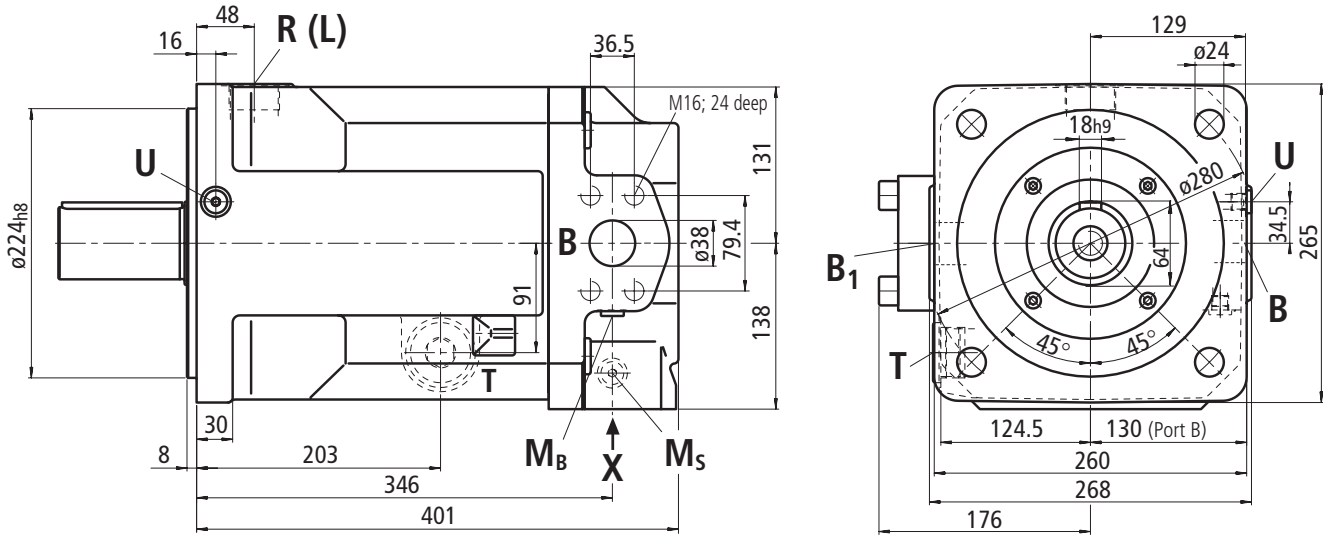
Z
Splined shaft
W50x2x30x24x9g
DIN 5480



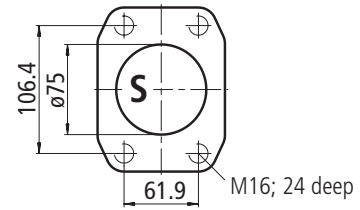
Unit Dimensions, Size 250

Prior to finalising your design, please obtain a certified drawing.

Clockwise and anti-clockwise operation



View X

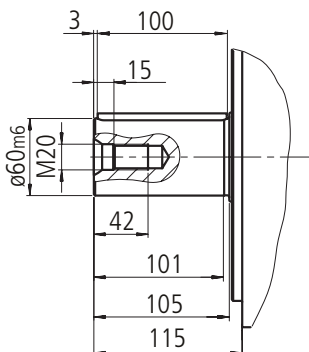


Connections

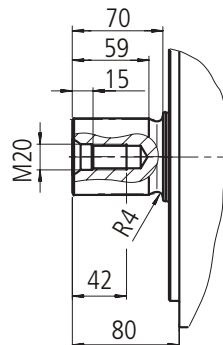
| | | |
|----------------|---|-----------------------------------|
| B | Service line port | SAE 1 1/2" (high pressure series) |
| B ₁ | 2nd service line port (plugged with a flange) | SAE 1 1/2" (high pressure series) |
| S | Suction port | SAE 3" (standard series) |
| R (L) | Case drain port, oil filling | M42x2 |
| T | Oil drain (plugged) | M42x2 |
| M_B | Gauge port operating pressure (plugged) | M14x1,5 |
| M_S | Gauge port suction pressure (plugged) | M14x1,5 |
| U | Flushing port (bearing flushing) (plugged) | M14x1,5 |

Shaft ends

P
Parallel shaft with key
AS 18x11x100
DIN 6885



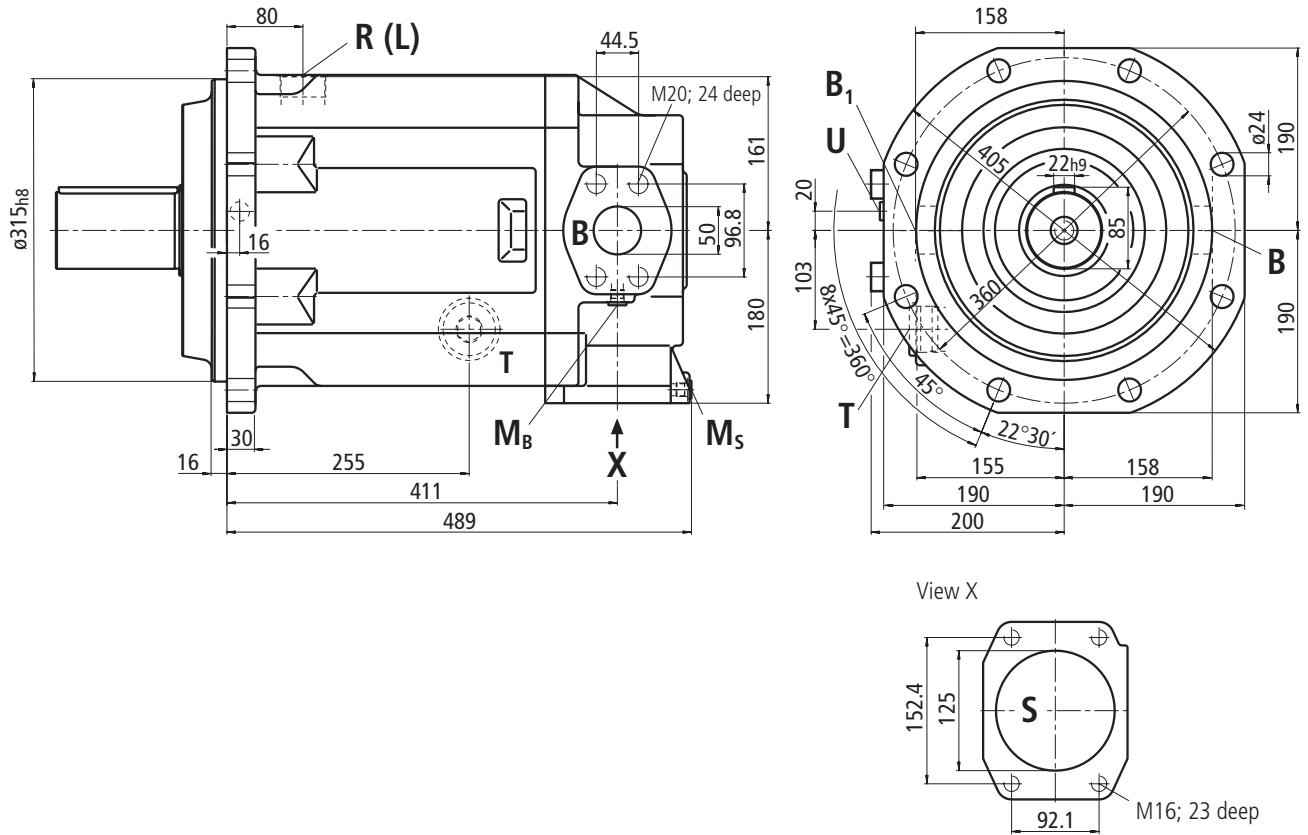
Z
Splined shaft
W60x2x30x28x9g
DIN 5480



Unit Dimensions, Size 500

Prior to finalising your design, please obtain a certified drawing.

Clockwise and anti-clockwise operation



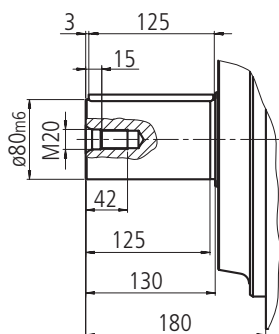
Connections

| | | |
|-------|--|-------------------------------|
| B | Service line port | SAE 2" (high pressure series) |
| B_1 | 2nd service line port (plugged with a flange) | SAE 2" (high pressure series) |
| S | Suction port | SAE 5" (standard series) |
| R (L) | Case drain port, oil filling | M48x2 |
| T | Oil drain (plugged) | M48x2 |
| M_B | Gauge port operating pressure (plugged) | M18x1,5 |
| M_S | Gauge port suction pressure (plugged) | M18x1,5 |
| U | Flushing port (bearing flushing) (plugged) | M18x1,5 |

Shaft ends

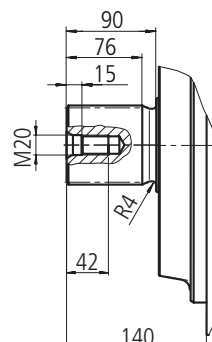
P

Parallel shaft with key
AS 22x14x125
DIN 6885



Z

Splined shaft
W80x3x30x25x9g
DIN 5480

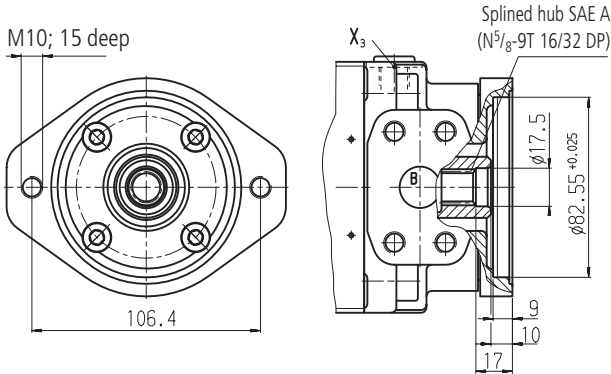


Unit Dimensions, Through Drives

Prior to finalising your design, please obtain a certified drawing.

Through drive SAE A (K01)

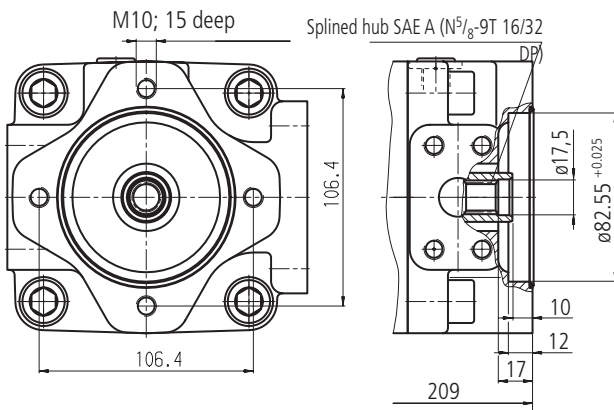
Sizes 16, 22, 28



suitable for connection of:

- gear pump G2 (RE 10030)
- variable pump A10VS010 (RE 92713)
- variable pump A10VS018 (RE 92712)

Size 40

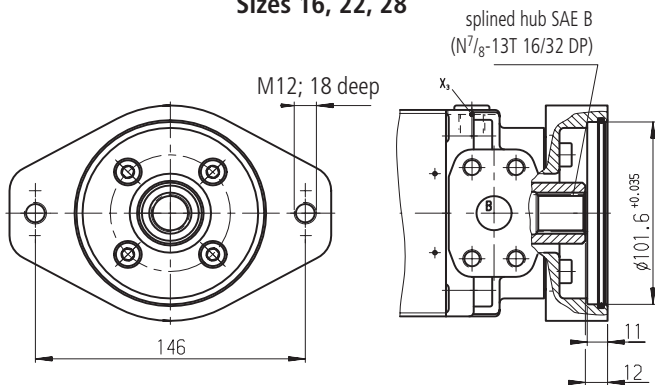


suitable for connection of:

- gear pump G2 (RE 10030)
- variable pump A10VS010 (RE 92713)
- variable pump A10VS018 (RE 92712)

Through drive SAE B (K02)

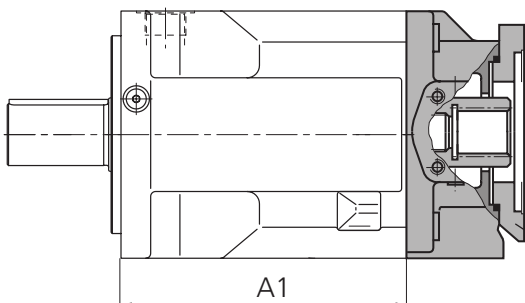
Sizes 16, 22, 28



suitable for connection of:

- fixed pump A4FO 16, 22, 28
- gear pump G3 (RE 10039)
- gear pump G4 (RE 10042)
- variable pump A10VG18 (RE 92750)
- variable pump A10VO28 (RE 92701/RE 92703)

Through drive sizes 71...500 (see RE 92050, A4VSO)



Through drive dimensions see RE 92050 (A4VSO)

| Size | 71 | 125 | 250 | 500 |
|------|-----|-----|-----|-----|
| A1 | 194 | 231 | 293 | 335 |

Permissible Input and Through Drive Rotation Torques

| Size | | | 16 | 22 | 28 | 40 |
|---|---------------------------|-----------------------|----------------------------|----------------------------|----------------------------|-------------------------------------|
| Corner torque (at $\Delta p = 400$ bar) ¹⁾ | T_{\max} | Nm | 102 | 140 | 178 | 254 |
| Max. perm. through drive torque ²⁾ | $T_{D \text{ perm.}}$ | Nm | 192 | 192 | 192 | 314 |
| Max. perm. input torque ³⁾ | shaft end S (SAE J744) | $T_{E \text{ perm.}}$ | 192 (SAE B, W $7/8$ ") | 192 (SAE B, W $7/8$ ") | 192 (SAE B, W $7/8$ ") | – |
| | shaft end T (SAE J744) | $T_{E \text{ perm.}}$ | – | – | – | 602 (SAE C, W $1\frac{1}{4}$ ") |

| Size | | | 71 | 125 | 250 | 500 |
|---|--|-----------------------|--------------------|---------------------|-----------------------|-----------------------|
| Corner torque (at $\Delta p = 350$ bar) ¹⁾ | T_{\max} | Nm | 395 | 696 | 1391 | 2783 |
| Max. perm. through drive torque ²⁾ | $T_{D \text{ perm.}}$ | Nm | 395 | 696 | 1391 | 2783 |
| Max. perm. input torque ³⁾ | shaft end Z (DIN 5480) | $T_{E \text{ perm.}}$ | 790 (W40) | 1392 (W50) | 2782 (W60) | 5566 (W80) |
| | shaft end P (keyed shaft, DIN 6885) | $T_{E \text{ perm.}}$ | 700 (AS12x8x68) | 1392 (AS14x9x80) | 2300 (AS18x11x100) | 5200 (AS22x14x125) |

1) efficiency not taken into consideration

2) note: max. perm. input torque $T_{E \text{ perm.}}$ may not be exceeded

3) drive shaft without side load

Code explanations

$T_{D \text{ perm.}}$ = max. permissible through drive torque

in Nm

$T_{E \text{ perm.}}$ = max. permissible input torque at the drive shaft

in Nm

T_1 = take off torque at 1st pump $= \frac{1,59 \cdot V_{g1} \cdot \Delta p_1}{100 \cdot \eta_{mh}}$ in Nm

T_2 = take off torque at 2nd pump $= \frac{1,59 \cdot V_{g2} \cdot \Delta p_2}{100 \cdot \eta_{mh}}$ in Nm

V_{g1} = pump displacement per rev. 1st pump in cm³

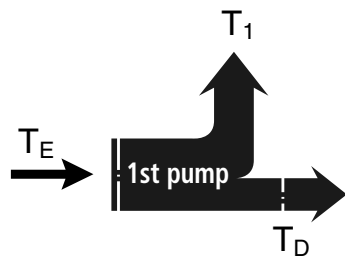
V_{g2} = pump displacement per rev. 2nd pump in cm³

Δp_1 = differential pressure 1st pump in bar

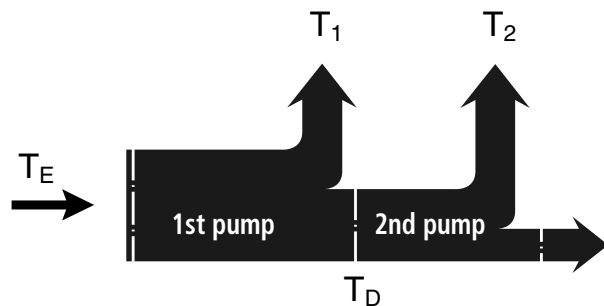
Δp_2 = differential pressure 2nd pump in bar

η_{mh} = mechanical-hydraulic efficiency

Single pump



Combination pump



Installation and Commissioning Guidelines, Sizes 16...40

General

At start-up and during operation the pump housing has imperatively to be filled up with hydraulic fluid (filling of the case chamber). Start-up has to be carried out at low speed and without load till the system is completely bled.

At a longer standstill the case may discharge via operating line. At new start-up a sufficient filling of the housing has to be granted.

The min. suction pressure at port S should not fall below 0,8 bar absolute.

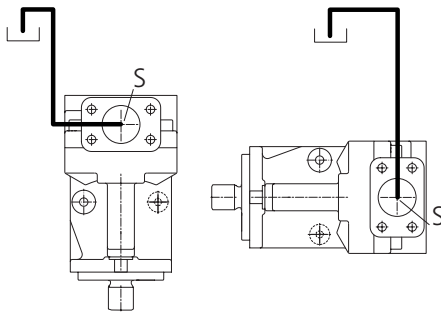
Installation position

Shaft horizontally resp. to the bottom. When mounting on top of the tank the installation position "shaft horizontally, suction port to the bottom" is not admissible!

Installation below tank level

Pumps below min. oil level in the tank (standard)

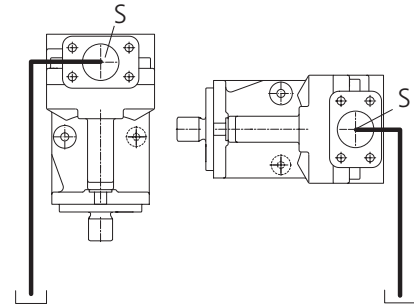
- Fill up axial piston pump before start-up via highest positioned case drain port
- Recommendation: Fill up suction lines
- Operate pump at low speed (igniton speed) till pump system is completely filled up
- Minimum immersion depth of the suction line or drain line in the tank: 200 mm (relative to the min. oil level in the tank).



Installation on top of tank level

Pump on top of min. oil level in the tank

- Actions as installation below tank level
- Installation positions "shaft to the top" and "shaft horizontally, suction port at bottom" are not admissible (at standstill the pump case is bleeding via suction line).
- note: - max. perm. suction pipe length $h_{max} = 800$ mm
- min. admissible pressure at port S (min. suction pressure)



Installation and Commissioning Guidelines, Sizes 71...500

see RE 92050 (A4VSO)

Bosch Rexroth AG
Mobile Hydraulics
Product Segment Axial Piston Units
Elchingen Plant
Glockeraustrasse 2
89275 Elchingen, Germany
Telephone +49 (0) 73 08 82-0
Facsimile +49 (0) 73 08 72 74
info.brm-ak@boschrexroth.de
www.boschrexroth.com/brm

Horb Plant
An den Kelterwiesen 14
72160 Horb, Germany
Telephone +49 (0) 74 51 92-0
Facsimile +49 (0) 74 51 82 21

© 2003 by Bosch Rexroth AG, Mobile Hydraulics, 89275 Elchingen
All rights reserved. No part of this document may be reproduced or stored, processed, duplicated or circulated using electronic systems, in any form or by any means, without the prior written authorization of Bosch Rexroth AG. In the event of contravention of the above provisions, the contravening party is obliged to pay compensation.

The data specified above only serve to describe the product. No statements concerning a certain condition or suitability for a certain application can be derived from our information. The given information does not release the user from the obligation of own judgement and verification. It must be remembered that our products are subject to a natural process of wear and aging.