

Compact hydrostatic drive HYDROTRAC GFT 45 T2/T3 with preliminary shiftable gear stage

RE 77115

Edition: 02.2016

Replaces: 01.2007



- ▶ Size GFT 45 T2/T3
- ▶ Output torque max. 45000 Nm

Features

- ▶ Defined increment step matching the hydraulic transmission range
- ▶ Gear shifting when moving
- ▶ Parking brake function
- ▶ Compact design

Content

Description, Brake / Clutch, Hydraulic Motors, Shipment, Weights, Oil Volume, Dimensions, Other Notes	2
Dimensions and Technical Data	3

Additional information at:
www.boschrexroth.com/gears



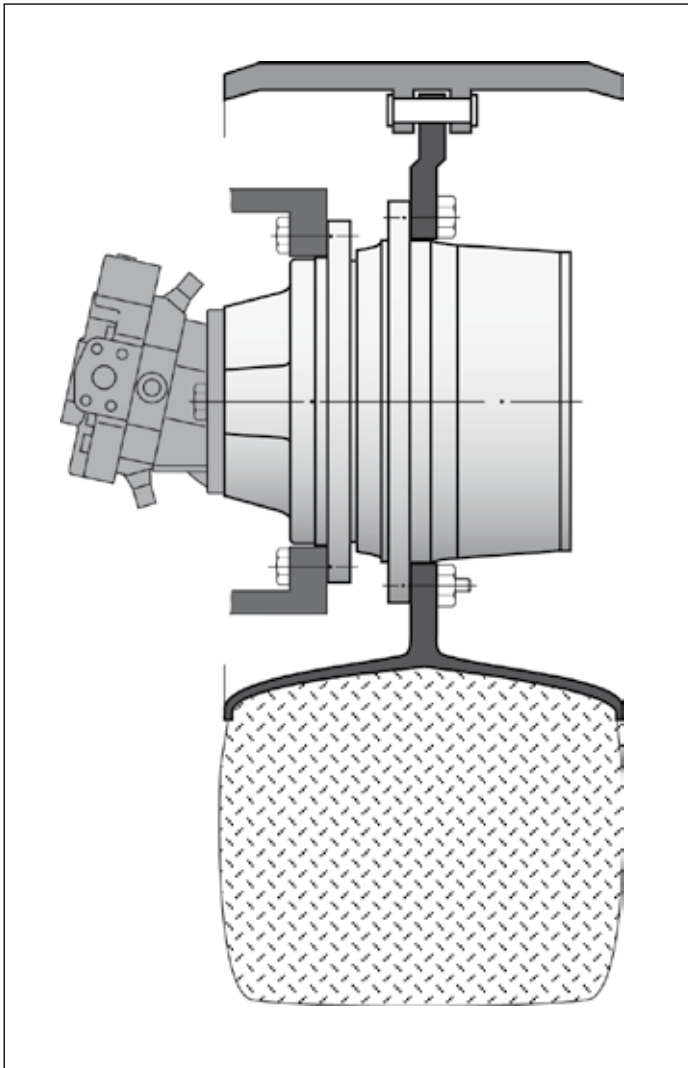
2 HYDROTRAC GFT 45 T2/T3 | Compact hydrostatic drive with preliminary shiftable gear stage Functional description

Description

Two-speed travel drive HYDROTRAC GFT 45 T2/3 capable of shifting gears under load has been designed for vehicles which when performing normal work run at uniform low speed but are required to move significantly faster e.g. when traveling from one location to another.

This gear drive variant may for example be employed for blacktop paving equipment.

Gear shifting is effected by operating the two integrated clutches. As a result of the force-closed clutch design using friction plates gearshifting may also take place when the vehicle is moving.



Brake / Clutch

When the vehicle is stationary the static locking torque is applied by engaging the two clutches. This causes the preliminary gear stage to be blocked. If inverted braking is permissible through engaging the disconnected clutch a service brake function can be achieved when using appropriately sized friction plates.

Hydraulic Motors

The gearbox has been designed for the direct attachment of a variable-displacement motor (preferably Rexroth hydraulic motors). This motor will be included in the supply on request.

Delivery / Shipment

Rexroth planetary gear units of type HYDROTRAC are shipped ready for mounting, but without oil filling. Standard supply includes external gearbox priming paint coat of color shade grey(similar to RAL 7032).

An internal preservation protects the unit against corrosion for a period of 12 months when stored in a dry place. Surfaces of external flanges, shaft ends and attachment faces are applied with preservative e.g. PERIGOL VCI 230 or CUSTOS 10-38.

Weights, Oil Volume, Dimensions

The weights indicated are to be understood as average values. However, the oil volume must always be ascertained via the oil level monitoring device. The figures and dimensions are not strictly obligatory. We reserve the right to implement technical modifications aimed at improving our products.

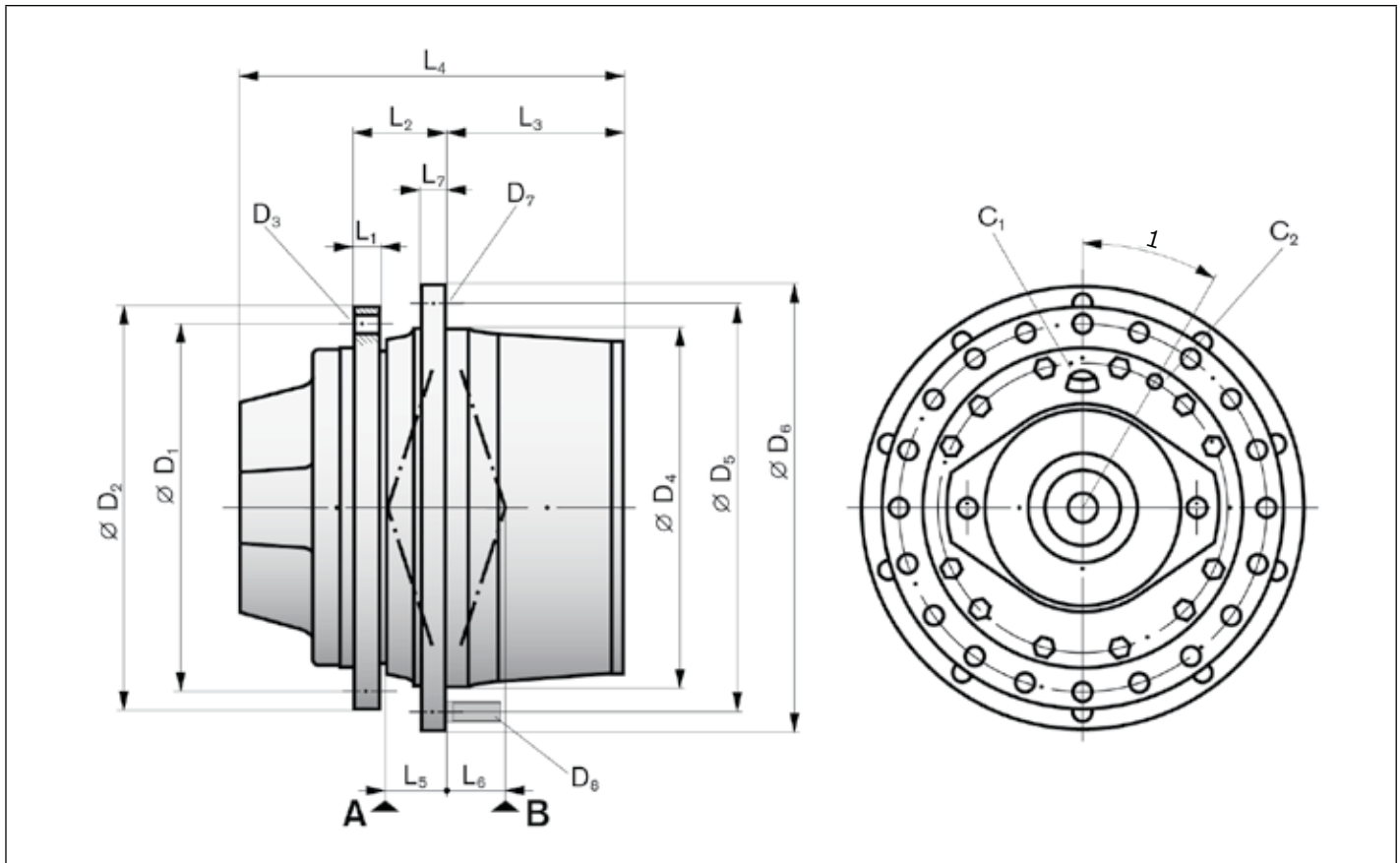
Other Notes

Statutory requirements provide that all rotating components must be provided with touch guards. All safety regulations prescribed for the relevant mounting locations must be observed. Commissioning and maintenance of the gear units to be in line with the instructions provided in our operating manual.

Please also observe our gearboxes series HYDROTRAC GFT 2000 (RE 77116) und HYDROTRAC GFT 8000 (RE 77117, RE 77128).

For the complete range of gearbox products available from Bosch Rexroth please visit www.boschrexroth.com/gears

Dimensions



Technical Data

			1st Speed	2nd Speed
Transmission ratio	i		166,3	36,6
Input torque	$T_{1 \max}$	Nm	270	730
Input speed	$n_{1 \max}$	min ⁻¹	3324	3000
Output torque	$T_{2 \max}$	Nm	45000	26700
Output speed	$n_{2 \max}$	min ⁻¹	20	82
Max. locking torque of brake, static	T_{BR}	Nm	1600	730
Release pressure	p	bar	23	23
Max. release pressure	p_{\max}	bar	30	30

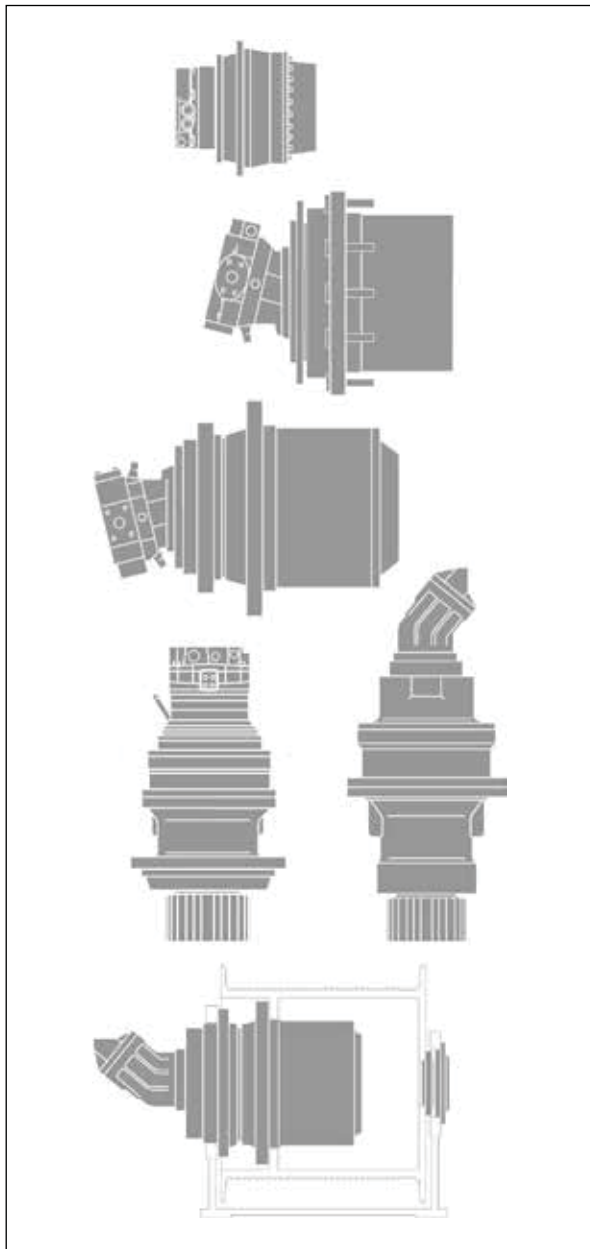
Values indicated are maximum values.

Dimensions and masses

Type/design variant GFT	D1	D2	D3	D4	D5	D6	D7	D8	1	Mass
										kg
GFT 45 T2/T3	360	395	M20x2,5	350	400	435	M20x1,5		30°	195

Type/design variant GFT	L1	L2	L3	L4	L5	L6	L7	A + B C C ₀	C ₁	C ₂
										kN
GFT 45 T2/T3	25	89	174,5	376	59,1	53,6	23	170 405	M12x1,5	

Planetary gearboxes for mobile units



Hydrostatic travel drives

- HYDROTRAC GFT
For fixed- or variable-displacement motors
Output torques between 9,5 and 580 kNm
Data sheet RE 77110
- HYDROTRAC GFT 2000
Series 30
Output torques between 13,5 and 42,5 kNm
Data sheet RE 77116
- HYDROTRAC GFT 8000
Series 30
Output torques between 20 and 30 kNm
Data sheet RE 77128
- HYDROTRAC GFT 8000
Series 40
Output torques between 10 and 130 kNm
Data sheet RE 77117
- HYDROTRAC GFT 45 T2/T3
Output torques max. 45 kNm
Data sheet RE 77115

Hydrostatic swing drives

- MOBILEX GFB
For fixed- or variable-displacement motors
Output torques between 4 and 68,3 kNm
Data sheet RE 77201
- MOBILEX GFB 2000
Series 20
Output torques between 4 and 14,5 kNm
Data sheet RE 77206

Hydrostatic winch gears

- MOBILEX GFT-W
For fixed- or variable-displacement motors
Output torques between 14 and 325 kNm
Data sheet RE 77502

Bosch Rexroth AG

Transmission Unit
Nortkirchenstr. 53
44263 Dortmund, Germany
Tel. +49 231 22819-5
info.gears@boschrexroth.de
www.boschrexroth.com/gears

© All rights reserved by Bosch Rexroth AG, including in relation to filing of industrial property rights. Any and all rights of disposal such as the right to copy or disclose the information shall remain with us. The data specified are intended solely for product description. The information provided by us must not be construed as a warranty of a specific property or fitness for a particular purpose. The information given does not relieve the user from making his own assessments and tests. Note that our products are subject to normal wear and aging.